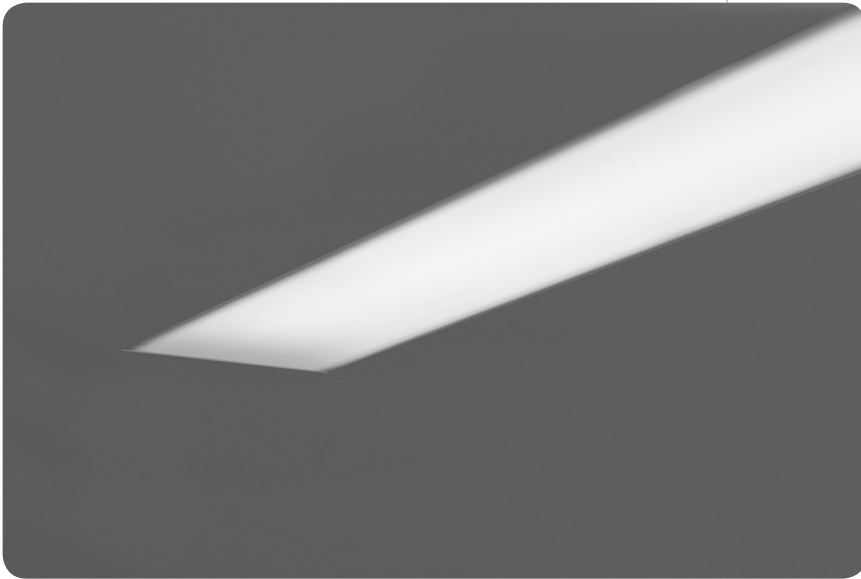


drywall/hard ceiling  
**seem® 4**



**features**

Narrow 4" aperture slot fluorescent luminaire that integrates with the ceiling for a clean unobtrusive aesthetic.

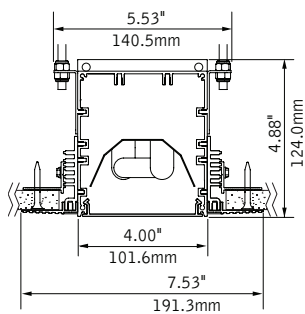
Frosted acrylic flush lens provides even illumination, high performance lens available for increased efficiency. Parabolic louver also available.

Allows for individual and continuous row mount in trimless or flanged drywall applications.

Available in 1 lamp T5, T5HO or T8 and 2 lamp T5 or T8 configurations, Seem 4 provides continuous illumination by combining 3' and 4' staggered lamps. Specify 1 lamp for even appearance and minimal lamp image, or 2 lamps when higher light levels are required.

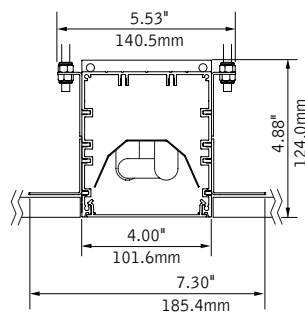
**dimensional data**

**trimless mud-in**



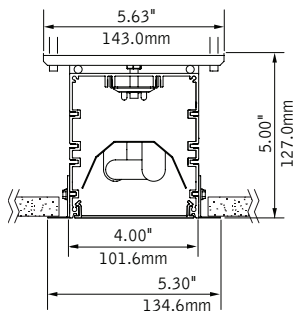
note: 0.375"min - 2.125"max ceiling thickness

**non-drywall hard surface**



note: 0.375"min - 2.125"max ceiling thickness

**trim flange**



**trim options**



trimless mud-in



trim flange

**shielding**



louver

**companion luminaires**



wall to ceiling corner



suspended

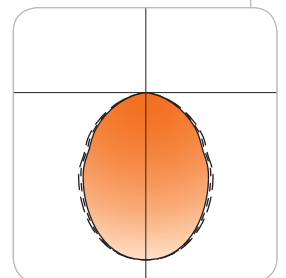


wall mount

**performance**

1-Lamp T5  
 High Performance  
 Lens  
 77% Efficiency  
 999 cd @ 0°

1-Lamp T5  
 Flush Satin Lens  
 56% Efficiency  
 595 cd @ 0°



Visit [focalpointlights.com](http://focalpointlights.com) for complete photometric data.

fixture:

project:

### specifications

#### construction

One piece, .07" thick housing of 6063-T5 extruded aluminum.

20 Ga. steel end caps.

Luminaires include trimless aluminum flange.

Lengths 6' and longer configured with staggered lamps:

1-lamp T8:	4.47" overlap
2-lamp T8:	9.35" overlap
1-lamp T5/T5HO:	4.35" overlap
2-lamp T5:	2.00" overlap

2' unit weight:	18 lbs.
3' unit weight:	24 lbs.
4' unit weight:	30 lbs.
5' unit weight:	36 lbs.

#### optic

Reflectors fabricated of 22 Ga. steel finished in High Reflectance White powder coat.

Flush satin lens: extruded acrylic lens .07" thick with opal satin finish.

High performance flush lens: extruded acrylic lens .07" thick with increased light transmission.

Parabolic Louver: 0.75"H x 1.5" frequency fabricated of low iridescent semi-specular premium grade aluminum.

#### electrical

Luminaires are pre-wired with factory installed branch circuit wiring and over-molded quick connects.

Electronic fluorescent ballasts are thermally protected and have a Class "P" rating.

Optional dimming ballasts available.

UL and cUL listed.

#### finish

Polyester powder coat applied over a 5-stage pre-treatment.

### ordering

luminaire series FSM4  
Seem 4 FSM4

#### shielding

Flush Satin Lens FL  
High Performance Flush Lens FLXP  
(lamp image may be visible)  
Parabolic Louver PL

#### lamping

One Lamp T8 1T8  
Two Lamp T8 2T8  
One Lamp T5 1T5  
Two Lamp T5 2T5  
One Lamp T5HO 1T5HO

#### circuits

Single Circuit 1C  
Dual Circuit 2C  
(2-lamp luminaires only)

#### voltage

120 Volt 120  
277 Volt 277  
347 Volt 347

#### ballast

Electronic Instant Start <20% THD (T8 only) E  
Electronic Program Start <10% THD S  
Electronic Dimming Ballast\* D

#### mounting

Trim Flange Drywall TF  
Mud-in Trimless, pre-set for 1/2" Drywall XF1  
Mud-in Trimless, pre-set for 5/8" Drywall XF2  
Mud-in Trimless, set thickness in field (mounting equipment assembled in field) XFF  
Non-Drywall Hard Surface (not intended for combustible materials) XFN

#### factory options

Chicago Plenum CP  
Emergency Circuit\* EC  
Emergency Battery Pack\* EM  
Flex Whip\* FW  
HLR/GLR Fuse FU  
Include 3000K lamp L830  
Include 3500K lamp L835  
Include 4100K lamp L841

#### finish

Matte White WH

#### luminaire length

(lengths are nominal)  
Specify luminaire/row length in 1' increments X'  
(lengths 6' and longer configured with staggered lamps. 6' 2-lamp T8 configured with non-staggered lamps.)

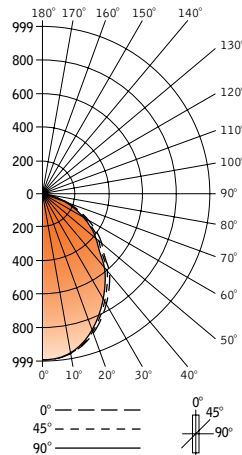
\* for more information see Reference section.

# recessed seem® 4



Filename: FSM4FLXP1T5.IES  
 Catalog #: FSM4-FLXP-1T5-1C-120-S-G1-WH-4'  
 Efficiency: 77%  
 Test #: 15712.0

## CANDLEPOWER DISTRIBUTION



Vertical Angle	0°	22.5°	45°	67.5°	90°	Zonal Lumens
0°	999	999	999	999	999	
5°	997	996	994	994	994	95
15°	942	941	937	93	931	266
25°	831	827	817	806	802	378
35°	692	685	670	654	648	421
45°	510	503	484	466	458	375
55°	378	373	355	338	333	319
65°	236	23	219	210	205	219
75°	118	116	111	105	103	117
85°	31	29	28	28	28	31
90°	0	0	0	0	0	0
95°	0	0	0	0	0	0
105°	0	0	0	0	0	0
115°	0	0	0	0	0	0
125°	0	0	0	0	0	0
135°	0	0	0	0	0	0
145°	0	0	0	0	0	0
155°	0	0	0	0	0	0
165°	0	0	0	0	0	0
175°	0	0	0	0	0	0
180°	0	0	0	0	0	0

Spacing 1.1  
 Criterion: 1.1

## LUMEN SUMMARY

Zone	Lumens	% Lamp	% Fixt
0°-30°	738	25.5	33.3
0°-40°	1159	40.0	52.2
0°-60°	1853	63.9	83.5
0°-90°	2220	76.6	100
<b>Total Luminaire</b>	<b>2220</b>	<b>76.6</b>	<b>100</b>

## LUMINANCE DATA (CD/M<sup>2</sup>)

Vertical Angle	0°	45°	90°
45°	6091	5781	5470
55°	5566	5227	4903
65°	4716	7376	4097
75°	3850	3622	3361
85°	3004	2713	2713

## CO-EFFICIENTS OF UTILIZATION

Floor	80	70	20	30	10	00
Ceiling	80	70	50	50	10	00
Wall	70 50 30 10	70 50 10	50 10	50 10	50 10	00
RCR 0	91 91 91 91	89 89 89	85 85	81 81	78 78	77
1	85 81 78 76	82 80 75	76 72	73 70	71 68	67
2	78 72 68 64	76 71 63	68 62	66 60	64 59	58
3	72 65 59 55	70 64 54	61 53	59 53	58 52	50
4	66 58 52 47	65 57 47	55 46	54 46	52 45	44
5	61 52 46 41	59 51 41	49 40	48 40	47 39	38
6	56 47 40 36	55 46 36	45 35	44 35	42 35	33
7	52 42 35 32	51 42 32	41 31	40 31	39 31	29
8	48 38 32 8	47 38 28	37 27	36 27	35 27	26
9	45 35 28 24	43 34 24	33 24	32 24	32 24	22
10	41 31 26 22	40 31 22	30 21	30 21	29 21	20

Numbers indicate percentage values of reflectivity.

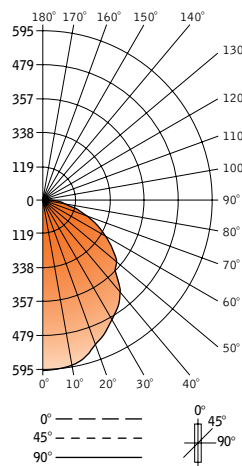
Go to [www.focalpointlights.com](http://www.focalpointlights.com) for additional photometric data.

# recessed seem® 4



Filename: FSM4FL1T5.IES  
 Catalog #: FSM4-FL-1T5-1C-120-S-G1-WH-4'  
 Efficiency: 56%  
 Test #: 15711.0

## CANDLEPOWER DISTRIBUTION



Vertical Angle	0°	22.5°	45°	67.5°	90°	Zonal Lumens
0°	595	595	595	595	595	
5°	591	591	591	591	591	56
15°	568	568	568	568	568	161
25°	515	515	515	515	515	238
35°	455	455	455	455	455	286
45°	353	355	355	355	355	275
55°	288	288	288	290	290	259
65°	198	196	198	198	199	196
75°	108	109	109	109	109	115
85°	28	28	28	28	29	31
90°	0	0	0	0	0	0
95°	0	0	0	0	0	0
105°	0	0	0	0	0	0
115°	0	0	0	0	0	0
125°	0	0	0	0	0	0
135°	0	0	0	0	0	0
145°	0	0	0	0	0	0
155°	0	0	0	0	0	0
165°	0	0	0	0	0	0
175°	0	0	0	0	0	0
180°	0	0	0	0	0	0

Spacing 1.2  
 Criterion: 1.2

## LUMEN SUMMARY

Zone	Lumens	% Lamp	% Fixt
0°-30°	456	15.7	28.2
0°-40°	742	25.6	45.9
0°-60°	1275	44.0	78.9
0°-90°	1617	55.8	100
<b>Total Luminaire</b>	<b>1617</b>	<b>55.8</b>	<b>100</b>

## LUMINANCE DATA (CD/M<sup>2</sup>)

Vertical Angle	0°	45°	90°
45°	4216	4240	4240
55°	4241	4241	4270
65°	3957	3957	3977
75°	3524	3557	3557
85°	2713	2713	2810

## CO-EFFICIENTS OF UTILIZATION

Floor	80	70	20	30	10	00
Ceiling	80	70	50	50	10	00
Wall	70 50 30 10	70 50 10	50 10	50 10	50 10	00
RCR 0	66 66 66 66	65 65 65	62 62	59 59	57 57	56
1	61 59 56 54	60 57 53	55 52	53 50	51 49	48
2	56 52 48 45	54 51 44	49 43	47 42	45 41	40
3	51 46 41 38	50 45 38	43 37	42 36	40 36	35
4	47 41 36 32	46 40 32	39 32	37 31	36 31	30
5	43 36 31 27	42 35 27	34 27	33 27	32 26	25
6	40 32 27 24	39 32 24	31 23	30 23	29 23	22
7	36 29 24 21	36 29 21	28 21	27 20	26 20	19
8	34 26 21 18	33 26 18	25 18	24 18	24 18	17
9	31 23 19 16	30 23 16	22 15	22 15	21 15	14
10	29 21 17 14	28 21 14	20 14	20 14	19 14	13

Numbers indicate percentage values of reflectivity.

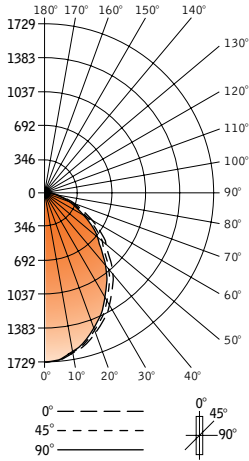
Go to [www.focalpointlights.com](http://www.focalpointlights.com) for additional photometric data.

recessed  
seem® 4



Filename: FSM4FLXP2T5.IES  
 Catalog #: FSM4-FLXP-2T5-1C-120-S-G1-WH-4'  
 Efficiency: 65%  
 Test #: 15716.0

CANDLEPOWER DISTRIBUTION



Spacing 1.1  
 Criterion: 1.1

Vertical Angle	Horizontal Angle				Zonal Lumens
	0°	22.5°	45°	67.5°	
0°	1729	1729	1729	1729	1729
5°	1718	1716	1714	1712	164
15°	1600	1594	1583	1573	449
25°	1422	1411	1384	1359	641
35°	1182	1165	1128	1093	709
45°	891	871	832	796	656
55°	654	639	604	575	544
65°	407	397	374	355	373
75°	203	200	188	180	200
85°	56	55	52	51	49
90°	0	0	0	0	0
95°	0	0	0	0	0
105°	0	0	0	0	0
115°	0	0	0	0	0
125°	0	0	0	0	0
135°	0	0	0	0	0
145°	0	0	0	0	0
155°	0	0	0	0	0
165°	0	0	0	0	0
175°	0	0	0	0	0
180°	0	0	0	0	0

LUMEN SUMMARY

Zone	Lumens	% Lamp	% Fixt
0°-30°	1254	21.6	33.1
0°-40°	1963	33.8	51.9
0°-60°	3153	54.4	83.3
0°-90°	3784	65.2	100
<b>Total Luminaire</b>	<b>3784</b>	<b>65.2</b>	<b>100</b>

LUMINANCE DATA (CD/M<sup>2</sup>)

Vertical Angle	0°	45°	90°
45°	10642	9937	9328
55°	9630	8893	8275
65°	8133	7474	6934
75°	6624	6135	5743
85°	5426	5039	4748

CO-EFFICIENTS OF UTILIZATION

Floor	80	70	50	30	10	00
Ceiling	70	50	30	10	50	10
Wall	78	78	78	78	76	76
RCR 0	72	69	67	65	70	68
1	66	62	58	54	65	60
2	61	55	50	47	60	54
3	56	49	44	40	55	49
4	52	44	39	35	51	43
5	48	40	34	31	47	39
6	44	36	31	27	43	36
7	41	33	27	24	40	32
8	38	29	24	21	37	29
9	35	27	22	18	34	26
10	32	24	18	14	31	22

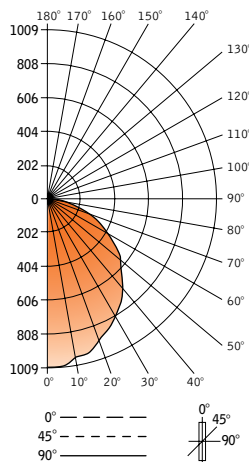
Go to [www.focalpointlights.com](http://www.focalpointlights.com) for additional photometric data.

recessed  
seem® 4



Filename: FSM4FL2T5.IES  
 Catalog #: FSM4-FL-2T5-1C-120-S-G1-WH-4'  
 Efficiency: 47%  
 Test #: 15715.0

CANDLEPOWER DISTRIBUTION



Spacing 1.2  
 Criterion: 1.2

Vertical Angle	Horizontal Angle				Zonal Lumens
	0°	22.5°	45°	67.5°	
0°	1009	1009	1009	1009	1009
5°	1008	1006	1006	1006	96
15°	954	952	952	952	270
25°	863	862	862	863	399
35°	759	761	761	761	478
45°	607	606	607	607	470
55°	488	488	489	491	439
65°	336	336	339	340	336
75°	181	183	184	184	194
85°	51	51	51	52	56
90°	0	0	0	0	0
95°	0	0	0	0	0
105°	0	0	0	0	0
115°	0	0	0	0	0
125°	0	0	0	0	0
135°	0	0	0	0	0
145°	0	0	0	0	0
155°	0	0	0	0	0
165°	0	0	0	0	0
175°	0	0	0	0	0
180°	0	0	0	0	0

LUMEN SUMMARY

Zone	Lumens	% Lamp	% Fixt
0°-30°	765	13.2	27.9
0°-40°	1243	21.4	45.4
0°-60°	2152	37.1	78.6
0°-90°	2738	47.2	100
<b>Total Luminaire</b>	<b>2738</b>	<b>47.2</b>	<b>100</b>

LUMINANCE DATA (CD/M<sup>2</sup>)

Vertical Angle	0°	45°	90°
45°	7250	7250	7250
55°	7185	7200	7230
65°	6714	6774	6794
75°	5906	6004	6004
85°	4942	4942	5136

CO-EFFICIENTS OF UTILIZATION

Floor	80	70	50	30	10	00
Ceiling	70	50	30	10	50	10
Wall	56	56	56	56	52	52
RCR 0	52	50	48	46	50	48
1	47	44	41	38	47	44
2	43	39	35	32	44	41
3	40	34	30	27	41	37
4	36	30	26	23	38	34
5	33	27	23	20	35	31
6	31	24	20	17	33	29
7	28	22	18	15	31	26
8	26	20	16	13	29	23
9	24	18	14	12	27	21
10	22	16	12	9	25	19

Go to [www.focalpointlights.com](http://www.focalpointlights.com) for additional photometric data.

Numbers indicate percentage values of reflectivity.

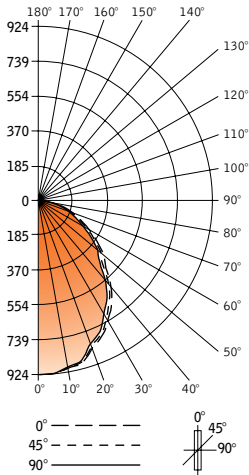
Numbers indicate percentage values of reflectivity.

recessed  
seem® 4



Filename: FSM4FLXP1T8.IES  
 Catalog #: FSM4-FLXP-1T8-1C-120-S-TF-WH-4'  
 Efficiency: 72%  
 Test #: 15815.0

CANDLEPOWER DISTRIBUTION



Spacing 1.1  
 Criterion: 1.1

Vertical Angle	Horizontal Angle				Zonal Lumens
	0°	22.5°	45°	67.5°	
0°	924	924	924	924	924
5°	922	920	920	920	88
15°	890	886	883	881	250
25°	791	787	778	767	360
35°	667	659	645	630	405
45°	490	481	464	448	360
55°	360	355	342	328	306
65°	222	218	207	200	207
75°	113	109	103	100	111
85°	29	27	25	23	28
90°	0	0	0	0	0
95°	0	0	0	0	0
105°	0	0	0	0	0
115°	0	0	0	0	0
125°	0	0	0	0	0
135°	0	0	0	0	0
145°	0	0	0	0	0
155°	0	0	0	0	0
165°	0	0	0	0	0
175°	0	0	0	0	0
180°	0	0	0	0	0

LUMEN SUMMARY

Zone	Lumens	% Lamp	% Fixt
0°-30°	698	23.7	33.0
0°-40°	1103	37.4	52.2
0°-60°	1769	60.0	83.7
0°-90°	2114	71.7	100
<b>Total Luminaire</b>	<b>2114</b>	<b>71.7</b>	<b>100</b>

LUMINANCE DATA (CD/M<sup>2</sup>)

Vertical Angle	0°	45°	90°
45°	5921	5607	5341
55°	5363	5095	4767
65°	4489	4185	3943
75°	3731	3401	3302
85°	2843	2451	2255

CO-EFFICIENTS OF UTILIZATION

Floor	80			70			20			50			30			10			00			
Ceiling	70	50	30	10	70	50	30	10	50	10	50	10	50	10	50	10	00	50	10	50	10	00
Wall	85	85	85	85	83	83	83	83	80	80	76	76	73	73	72	76	76	73	73	72		
RCR 0	85	85	85	85	83	83	83	83	80	80	76	76	73	73	72	76	76	73	73	72		
1	79	76	74	71	77	75	70	72	68	69	66	66	64	62	62	69	66	66	64	62		
2	73	68	64	60	71	66	59	64	58	62	57	62	57	60	55	60	55	60	55	54		
3	67	61	56	51	66	60	51	58	50	56	49	54	48	54	48	54	48	54	48	47		
4	62	54	49	44	61	53	44	52	44	50	43	49	42	49	42	49	42	49	42	41		
5	57	49	43	38	56	48	38	46	38	45	37	44	37	44	37	45	37	44	37	35		
6	53	44	38	34	51	43	33	42	33	41	33	40	33	40	33	41	33	40	33	31		
7	49	40	34	30	48	39	29	38	29	37	29	36	29	36	29	37	29	36	29	27		
8	45	36	30	26	44	35	26	34	26	33	26	33	26	33	26	33	26	33	26	24		
9	42	32	27	23	41	32	23	31	22	30	22	29	22	29	22	30	22	29	22	21		
10	39	29	24	20	38	29	20	28	20	28	20	27	20	27	20	28	20	27	20	19		

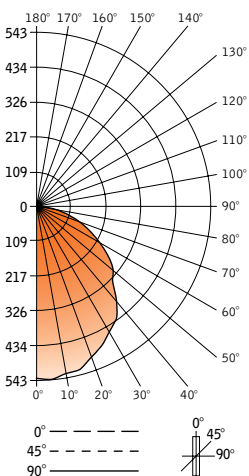
Go to www.focalpointlights.com for additional photometric data.

recessed  
seem® 4



Filename: FSM4FL1T8.IES  
 Catalog #: FSM4-FL-1T8-1C-120-S-TF-WH-4'  
 Efficiency: 52%  
 Test #: 15814.0

CANDLEPOWER DISTRIBUTION



Spacing 1.3  
 Criterion: 1.3

Vertical Angle	Horizontal Angle				Zonal Lumens
	0°	22.5°	45°	67.5°	
0°	539	539	539	539	539
5°	543	543	543	543	52
15°	528	528	528	528	150
25°	484	484	484	484	224
35°	433	433	433	433	272
45°	333	333	333	333	258
55°	271	271	271	271	243
65°	182	184	184	184	183
75°	102	100	102	102	107
85°	29	29	29	29	32
90°	0	0	0	0	0
95°	0	0	0	0	0
105°	0	0	0	0	0
115°	0	0	0	0	0
125°	0	0	0	0	0
135°	0	0	0	0	0
145°	0	0	0	0	0
155°	0	0	0	0	0
165°	0	0	0	0	0
175°	0	0	0	0	0
180°	0	0	0	0	0

LUMEN SUMMARY

Zone	Lumens	% Lamp	% Fixt
0°-30°	426	14.4	28.0
0°-40°	698	23.6	45.9
0°-60°	1199	40.6	78.9
0°-90°	1520	51.5	100
<b>Total Luminaire</b>	<b>1520</b>	<b>51.5</b>	<b>100</b>

LUMINANCE DATA (CD/M<sup>2</sup>)

Vertical Angle	0°	45°	90°
45°	4024	4024	4073
55°	4037	4037	4037
65°	3680	3720	3741
75°	3368	3368	3368
85°	2843	2843	2843

CO-EFFICIENTS OF UTILIZATION

Floor	80			70			20			50			30			10			00			
Ceiling	70	50	30	10	70	50	30	10	50	10	50	10	50	10	50	10	00	50	10	50	10	00
Wall	61	61	61	61	60	60	60	60	57	57	55	55	53	53	52	57	55	55	53	52		
RCR 0	61	61	61	61	60	60	60	60	57	57	55	55	53	53	52	57	55	55	53	52		
1	56	54	52	50	55	53	49	51	48	49	46	47	45	44	44	49	46	47	45	44		
2	52	48	44	41	50	47	41	45	40	43	39	42	38	37	37	43	39	42	38	37		
3	47	42	38	35	46	41	35	40	37	39	34	37	33	32	32	39	34	37	33	32		
4	43	38	33	30	42	37	30	36	29	34	29	33	28	27	27	34	29	33	28	27		
5	40	33	29	25	39	33	25	32	25	31	25	30	24	23	23	31	25	30	24	23		
6	37	30	25	22	36	29	22	28	22	27	21	27	21	20	20	27	21	27	21	20		
7	34	27	22	19	33	26	19	26	19	25	19	24	19	18	18	25	19	24	19	18		
8	31	24	20	19	30	24	17	23	16	22	16	22	16	15	15	22	16	22	16	15		
9	29	22	17	14	28	21	14	21	14	20	14	20	14	13	13	20	14	20	14	13		
10	27	20	15	13	26	19	13	19	13	18	13	18	13	12	12	18	13	18	13	12		

Go to www.focalpointlights.com for additional photometric data.

Numbers indicate percentage values of reflectivity.

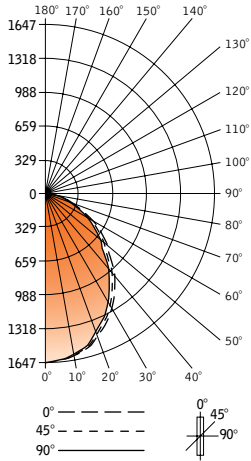
Numbers indicate percentage values of reflectivity.

# seem® 4



Filename: FSM4FLXP2T8.IES  
 Catalog #: FSM4-FLXP-2T8-1C-120-S-TF-WH-4'  
 Efficiency: 63%  
 Test #: 15813.0

## CANDLEPOWER DISTRIBUTION



Spacing 1.1  
 Criterion: 1.1

Vertical Angle	Horizontal Angle				Zonal Lumens
	0°	22.5°	45°	67.5°	
0°	1647	1647	1647	1647	1647
5°	1631	1631	1629	1627	1627
15°	1563	1560	1551	1541	1536
25°	1396	1387	1363	1341	1332
35°	1161	1149	1120	1090	1075
45°	875	861	828	797	785
55°	645	631	604	578	569
65°	402	393	374	357	350
75°	200	196	186	176	174
85°	55	51	51	46	46
90°	0	0	0	0	0
95°	0	0	0	0	0
105°	0	0	0	0	0
115°	0	0	0	0	0
125°	0	0	0	0	0
135°	0	0	0	0	0
145°	0	0	0	0	0
155°	0	0	0	0	0
165°	0	0	0	0	0
175°	0	0	0	0	0
180°	0	0	0	0	0

## LUMEN SUMMARY

Zone	Lumens	% Lamp	% Fixt
0°-30°	1226	20.8	32.8
0°-40°	1929	32.7	51.6
0°-60°	3114	52.8	83.3
0°-90°	3738	63.3	100
<b>Total Luminaire</b>	<b>3738</b>	<b>63.3</b>	<b>100</b>

## LUMINANCE DATA (CD/M<sup>2</sup>)

Vertical Angle	0°	45°	90°
45°	10574	10006	9486
55°	9606	8998	8477
65°	8128	7562	7077
75°	6603	6141	5745
85°	5392	5000	4510

## CO-EFFICIENTS OF UTILIZATION

Floor	80			70			20			50			30			10			00		
Ceiling	70	50	30	10	70	50	10	50	10	50	10	50	10	50	10	50	10	50	10	50	10
RCR 0	75	75	75	75	74	74	74	70	70	67	67	65	65	63	61	58	59	56	55	55	55
1	70	67	65	63	68	66	62	63	60	61	58	59	56	55	54	50	49	48	48	48	48
2	64	60	56	53	63	59	52	56	51	54	49	43	48	43	41	33	38	32	31	31	31
3	59	54	49	45	58	53	45	51	44	46	38	44	38	43	37	36	32	31	31	31	31
4	55	48	43	39	53	47	39	46	38	44	38	43	37	36	32	29	29	27	27	27	27
5	50	43	38	34	49	42	33	41	33	40	33	40	33	38	32	29	27	27	27	27	27
6	47	39	33	30	45	38	29	37	29	36	29	35	29	27	24	22	22	22	22	22	22
7	43	35	30	26	42	34	26	33	26	33	26	32	25	24	22	22	22	22	22	22	22
8	40	31	26	23	39	31	23	30	23	29	22	29	22	22	22	22	22	22	22	22	22
9	37	28	23	20	36	28	20	27	20	27	20	26	20	20	20	20	20	20	20	20	20
10	34	26	21	18	33	26	18	25	18	24	17	24	17	16	16	16	16	16	16	16	16

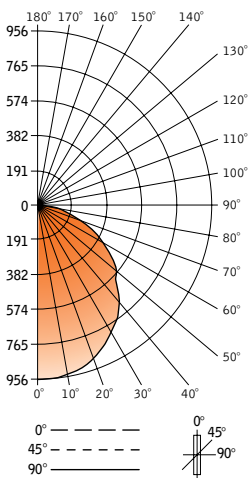
Go to [www.focalpointlights.com](http://www.focalpointlights.com) for additional photometric data.

# seem® 4



Filename: FSM4FL2T8.IES  
 Catalog #: FSM4-FL-2T8-1C-120-S-TF-WH-4'  
 Efficiency: 46%  
 Test #: 15812.0

## CANDLEPOWER DISTRIBUTION



Spacing 1.3  
 Criterion: 1.3

Vertical Angle	Horizontal Angle				Zonal Lumens
	0°	22.5°	45°	67.5°	
0°	956	956	956	956	956
5°	956	954	954	954	954
15°	922	922	922	922	924
25°	852	852	852	852	854
35°	755	754	754	754	755
45°	598	598	598	598	600
55°	483	481	485	481	485
65°	329	327	331	333	333
75°	177	179	179	181	182
85°	50	50	51	50	51
90°	0	0	0	0	0
95°	0	0	0	0	0
105°	0	0	0	0	0
115°	0	0	0	0	0
125°	0	0	0	0	0
135°	0	0	0	0	0
145°	0	0	0	0	0
155°	0	0	0	0	0
165°	0	0	0	0	0
175°	0	0	0	0	0
180°	0	0	0	0	0

## LUMEN SUMMARY

Zone	Lumens	% Lamp	% Fixt
0°-30°	747	12.7	27.8
0°-40°	1221	20.7	45.4
0°-60°	2118	35.9	78.7
0°-90°	2691	45.6	100
<b>Total Luminaire</b>	<b>2691</b>	<b>45.6</b>	<b>100</b>

## LUMINANCE DATA (CD/M<sup>2</sup>)

Vertical Angle	0°	45°	90°
45°	7227	7227	7251
55°	7196	7226	7226
65°	6652	6693	6733
75°	5844	5910	6009
85°	4902	5000	5000

## CO-EFFICIENTS OF UTILIZATION

Floor	80			70			20			50			30			10			00		
Ceiling	70	50	30	10	70	50	10	50	10	50	10	50	10	50	10	50	10	50	10	50	10
RCR 0	54	54	54	54	53	53	53	51	51	49	49	47	47	46	43	41	42	40	39	39	39
1	50	48	46	44	49	47	44	45	42	43	41	42	40	39	38	35	37	34	33	33	33
2	46	42	39	37	45	41	36	40	35	38	35	37	34	33	34	30	33	29	28	28	28
3	42	37	34	31	41	37	31	35	30	34	30	33	29	28	30	25	29	25	24	24	24
4	38	33	29	26	37	33	26	31	26	30	25	29	25	24	27	22	26	21	21	21	21
5	35	29	25	22	34	29	22	28	22	27	22	26	21	21	24	19	24	19	18	18	18
6	32	26	22	19	31	26	19	25	19	24	19	21	16	16	20	14	19	14	13	13	13
7	30	24	20	17	29	23	17	23	17	22	17	20	14	14	18	12	17	12	12	12	12
8	27	21	17	15	27	21	15	20	14	20	14	19	14	13	16	11	16	11	11	11	11
9	25	19	15	13	25	19	13	18	13	18	12	17	12	12	16	11	16	11	11	11	11
10	23	17	14	11	23	17	11	17	11	17	11	16	11	11	16	11	16	11	11	11	11

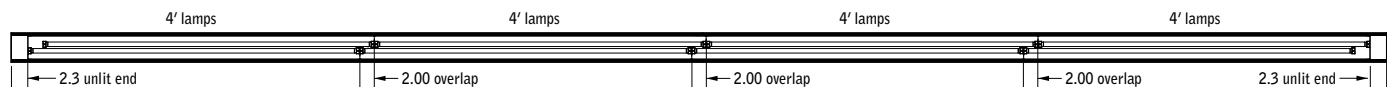
Go to [www.focalpointlights.com](http://www.focalpointlights.com) for additional photometric data.

# seem® 4 & 6 recessed run information

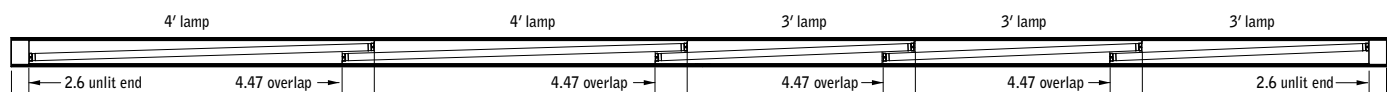
## EXAMPLE 16' run



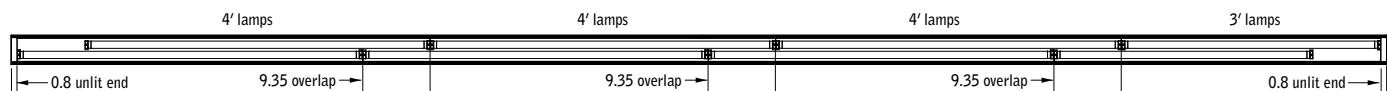
### 1-T5/T5H0



### 2-T5/T5H0 (may exhibit noticeable socket shadows)



### 1-T8



### 2-T8 (may exhibit noticeable socket shadows)

## notes:

- lamp overlap is consistent throughout run.
- unlit ends vary to provide even light throughout run.
- standard configurations listed, consult factory for additional options.
- 2T5H0 not available with Seem 4

# seem® 4 & 6 recessed run information

nominal run length (ft)	1-T5/T5HO (4.35" overlap)			2-T5/T5HO (2.00" overlap)			1-T8 (4.47" overlap)			2-T8 (9.35" overlap)		
	lamp quantity		unlit ends (in)	lamp quantity		unlit ends (in)	lamp quantity		unlit ends (in)	lamp quantity		unlit ends (in)
	3'	4'		3'	4'		3'	4'		3'	4'	
6		2	0.3*	4		0.2	2		1.8	n/a	n/a	n/a
7	1	1	3.6	2	2	0.3	1	1	1.8	4		0.8
8	3		0.5		4	0.4		2	1.8	2	2	0.8
9	2	1	0.6	6		1.1	3		4.0		4	0.9
10	1	2	0.6	4	2	1.2	2	1	4.1	6		0.8
11		3	0.8	2	4	1.3	4		0.3	4	2	0.8
12	2	2	0.3*		6	1.3	3	1	0.3	2	4	0.8
13	5		0.7	6	2	2.1	2	2	0.3		6	0.8
14	4	1	0.8	4	4	2.2	1	3	0.3	6	2	0.8
15	3	2	0.8	2	6	2.3		4	0.3	4	4	0.8
16	2	3	1.0		8	2.3	3	2	2.6	2	6	0.8
17	1	4	1.1	6	4	3.0	2	3	2.6		8	0.8
18		5	1.1	4	6	3.1	1	4	2.6	6	4	0.8
19	6	1	0.8	2	8	3.2	7		1.0	4	6	0.8
20	5	2	0.8		10	3.3	6	1	1.0	2	8	0.8
21	4	3	1.0	6	6	4.0	5	2	1.1		10	0.8
22	3	4	1.1	4	8	4.1	4	3	1.1	6	6	0.8
23	9		1.1	2	10	4.2	3	4	1.1	4	8	0.8
24	1	6	0.9		12	4.3	2	5	1.1	2	10	0.8
25	7	2	1.3	6	8	4.9	1	6	1.1		12	0.8
26	6	3	1.2	18		0.3		7	1.2	6	8	0.8
27	5	4	1.3	16	2	0.3	10		1.8	4	10	0.8
28	11		1.0	14	4	0.4	9	1	1.8	2	12	0.8
29	10	1	1.1	12	6	0.6	8	2	1.8		14	0.8
30	9	2	1.2	10	8	0.7	7	3	1.8	6	10	0.8
31	8	3	1.3		16	0.2	6	4	1.8	4	12	0.8
32	7	4	1.4	6	12	0.8	5	5	1.8	2	14	0.8
33	13		1.2	4	14	0.9	4	6	1.8		16	0.8
34	12	1	1.2	2	16	1.1	3	7	1.9	6	12	0.8
35	11	2	1.3		18	1.1	2	8	1.9	4	14	0.8
36	10	3	1.4	6	14	1.8	1	9	1.9	2	16	0.8
37	9	4	1.5	4	16	1.9	7	5	0.3		18	0.9
38	15		1.3	2	18	2.0	6	6	0.3	6	14	0.8
39	14	1	1.3		20	2.1	5	7	0.4	4	16	0.8
40	13	2	1.4	6	16	2.8	4	8	0.4	2	18	0.8
41	12	3	1.6	4	18	2.8	3	9	0.4		20	0.9
42	4	11	1.7	2	20	2.9	2	10	0.4	6	16	0.8
43	5	10	1.8		22	3.1	1	11	0.4	4	18	0.9
44	9	6	1.9	6	18	3.7		12	0.4	2	20	0.9
45	8	7	1.9	4	20	3.8	3	10	2.7		22	0.9
46	7	8	2.1	2	22	3.9	2	11	2.7	6	18	0.9
47	13	4	1.8		24	4.0	1	12	2.7	4	20	0.9
48	19		1.5	6	20	4.6	7	8	1.1	2	22	0.9

\* special lamp stagger to decrease end darkness.  
note: 2T5HO not available with Seem 4